

SCHOOL OF DOCTORAL RESEARCH AND INNOVATION

PhD Program



<https://www.glsuniversity.ac.in/phd.html>



Our Research Focus

At GLS University, we offer outstanding research training and professional development opportunities to our researchers, at every stage of their journey. These include scientifically designed coursework, workshops on research skills, access to the best research resources, mentoring services for academic writing and data analysis, opportunities for international research collaborations and much more.

These valuable, highly sought-after opportunities have been designed and are managed by leading research training academic and professional staff at the School of Doctoral Research and Innovation. Our philosophy of robust support enables you to identify your research interests, maintain momentum throughout your candidature, complete your doctorate successfully and achieve your research goals even beyond your PhD degree.



»» About GLS University

The zenith value of GLS University is to provide an ideal and innovative learning environment and continue the tradition of excellence in the education of the sponsoring body of the University, viz... Gujarat Law Society (GLS). GLS established in the year 1927, is one of the largest and oldest educational institutions in the state of Gujarat. GLS was promoted by luminaries Sardar Vallabhbhai Patel, Shri Ganesh Mavlankar, the first Speaker of the country, and Shri I. M. Nanavati with the vision of Excellence in Education. GLS University was established in April 2015 under Gujarat Private University Act-2009. In a short span, GLS University has become a Prestigious University with 15,000+ students 10+ departments, and 20+ programs in diverse disciplines like Business Management, Design, Law, Computer Application, Engineering, Commerce, Performing Arts, and Research at Undergraduate and Post Graduated levels which provides enhanced learning experiences through their excellent academic quality, well-equipped infrastructure, innovative teaching methods, creative curricular design, experienced faculty, and industry-oriented programs.

GLS University is a modern organization that retains the cultural & heritage values of providing a creative learning environment in a manner that is nationally entrenched, regionally recognized, and globally relevant. GLS University is a safe and inviting space with student-centric infrastructure located in the heart of Ahmedabad. Within the lush green campus of the University, students avail all the facilities of learning and recreation such as modern classrooms, computer labs, library, indoor and outdoor sports areas, gym, seminar halls, auditorium, canteen, and so on.

With its heritage in Gujarat's pioneering education field, GLS University has been an innovative force in education for many years. Our strong relationships with industry and impeccable career services complement high-quality teaching to ensure GLS students gain the knowledge and skills they need to match their ambition. Our academicians are experts in their fields and driven to deliver research that makes a meaningful social and environmental impact on the nation.

GLS University is also known as an education hub with liberal thoughts and rigorous learning along with policy from NEP - 2020. We offer flexible entry-exit options in relevant programs and also a dual degree program to accelerate the multi-discipline approach for students. GLS University also aligns with an industry-oriented curriculum and offers an industry apprenticeship program through various corporate collaborations which leads the university to focus on experiential learning.

Our new strategic plan is supported by three key pillars which provide a foundation for GLS University to focus on and expands over the next 10 years through meeting societal needs; expanding GLS University's global presence; and promoting skill-based education.

GLS University offers students a high-quality educational experience that prepares them for success in life, as well as research that addresses society's most persistent challenges. Our creation and transfer of knowledge contribute every day to our country's global competitive advantage and make the world a better place.



Dear Prospective Students,

Delighted to extend a warm welcome to you as you contemplate becoming a part of our vibrant academic community here at GLS University. As President, it is a matter of pride to lead an institution devoted to nurturing intellectual curiosity, personal development, and a dedication to excellence.

Selecting the right university is an important decision, and I want to assure you that GLS University is dedicated to providing an outstanding educational experience that will equip you for success in your future endeavours.

At GLS University, you will encounter a diverse and inclusive community of scholars, researchers, and students who are deeply passionate about effecting positive change in the world. Our faculty members are esteemed experts in their respective fields, and they are committed to assisting you in your academic and personal growth every step of the way. Whether your interests lie in the arts, sciences, business, or any other discipline, GLS University offers a broad spectrum of programs and opportunities for you to explore your passions. From leading-edge research to hands-on experiential learning, you will have access to resources and experiences that will empower you to realize your full potential.

In addition to academics, GLS University boasts a vibrant campus life with a plethora of extracurricular activities, clubs, and organizations to facilitate connections with peers who share your interests and values. From community service to cultural events and athletic competitions, there are boundless opportunities for you to engage and make meaningful contributions to our campus and beyond.

As you embark on this thrilling journey of higher education, I encourage you to discover all that GLS University has to offer. Take a tour of our campus, engage with faculty and students, and envision yourself as an integral part of our dynamic community. I am confident that you will find GLS University to be a place where you can flourish, excel, and forge enduring memories that will shape your future.

Thank you for considering GLS University for your academic aspirations. I eagerly anticipate welcoming you to our campus and providing support as you pursue your path to success.

Warm regards
Sudhir Nanavati
President



**From the
President's
Desk**



»» About School of Doctoral Research and Innovation (SDRI)

The School of Doctoral Research and Innovation is responsible for leadership, oversight and policy advice in relation to the Ph.D. degree as well as for support and guidance to research candidates and their supervisors.

The School promotes innovation and excellence in research education and researcher development across the University. It provides a range of services to support and develop its research students, supervisors and early career researchers including research education programs, policy development, advice and scholarships.

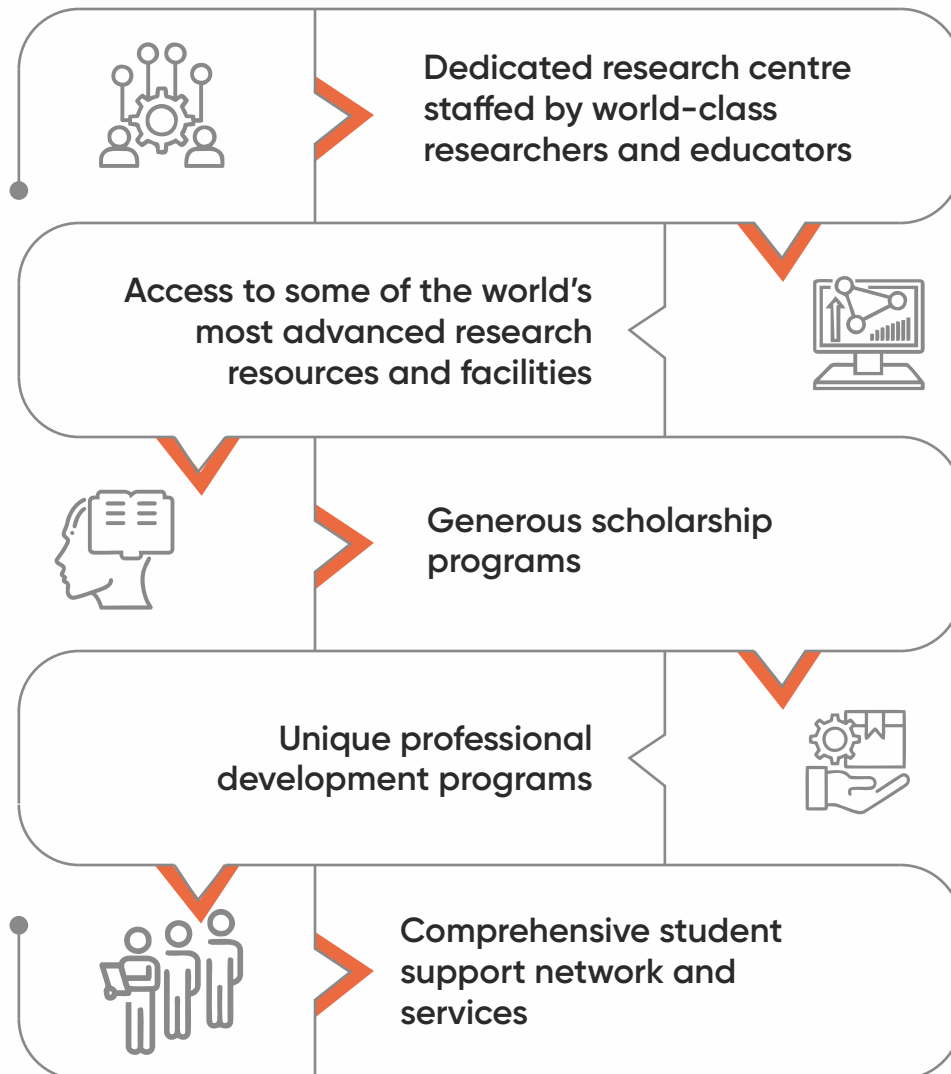
The School aims to enhance the quality of the research experience and culture at GLS University by providing face-to-face and online training, seminars, academic events and social activities. It also promotes high-quality research training through clear policies, procedures, information and support processes. The school also fosters good practice in supervision through the provision of training and compliance procedures for supervisors.

The School offers the PhD programme in most major disciplines including:

- »» Business and Management**
- »» Commerce**
- »» Information Technology and Computer Sciences**
- »» Design**
- »» Law**
- »» Computer Engineering**
- »» Interdisciplinary**

At SDRI, you will undertake research in your chosen field while working alongside international leaders.

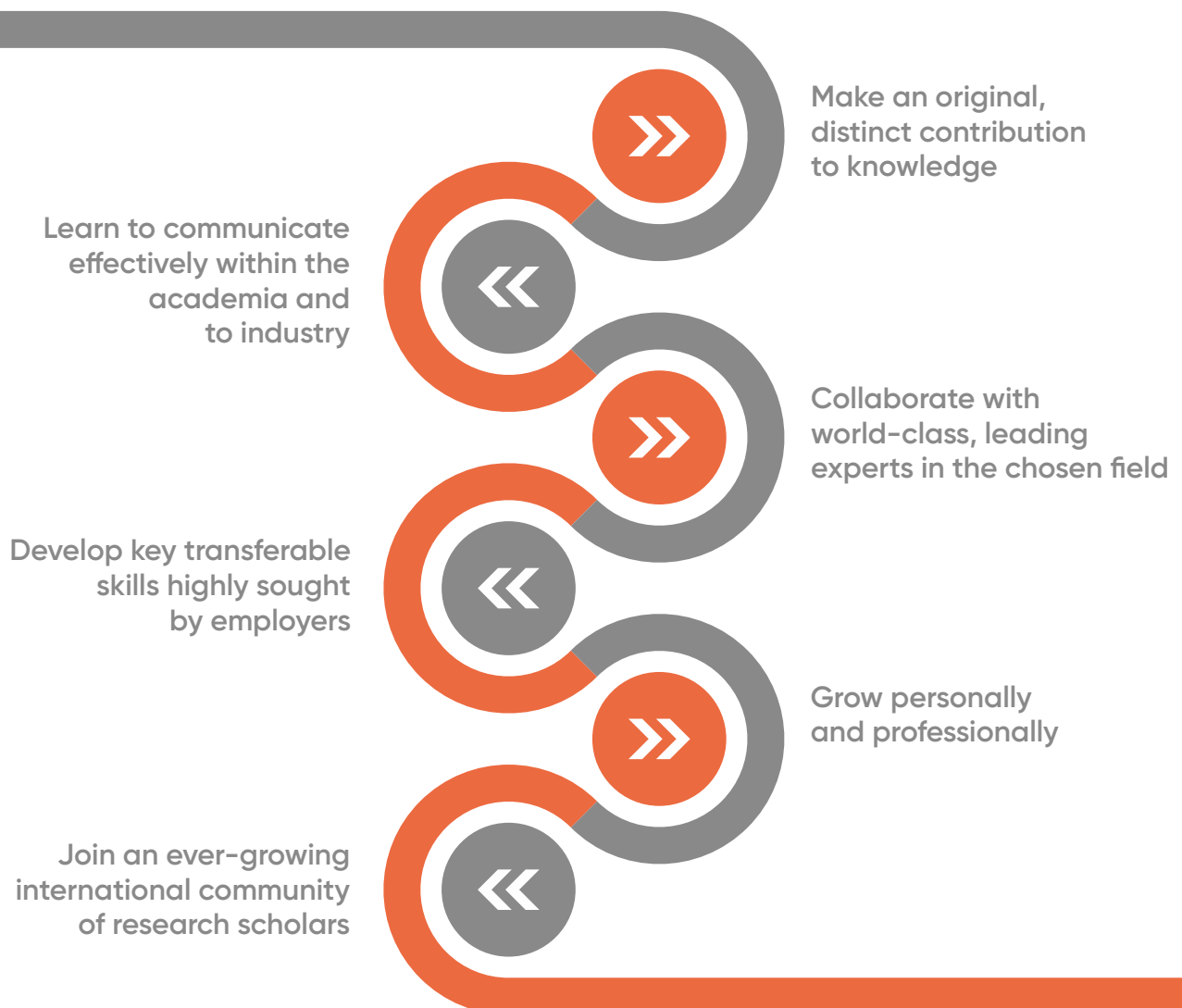
We value our graduate researchers and assist in every way to ensure that your research is well supported. We provide:





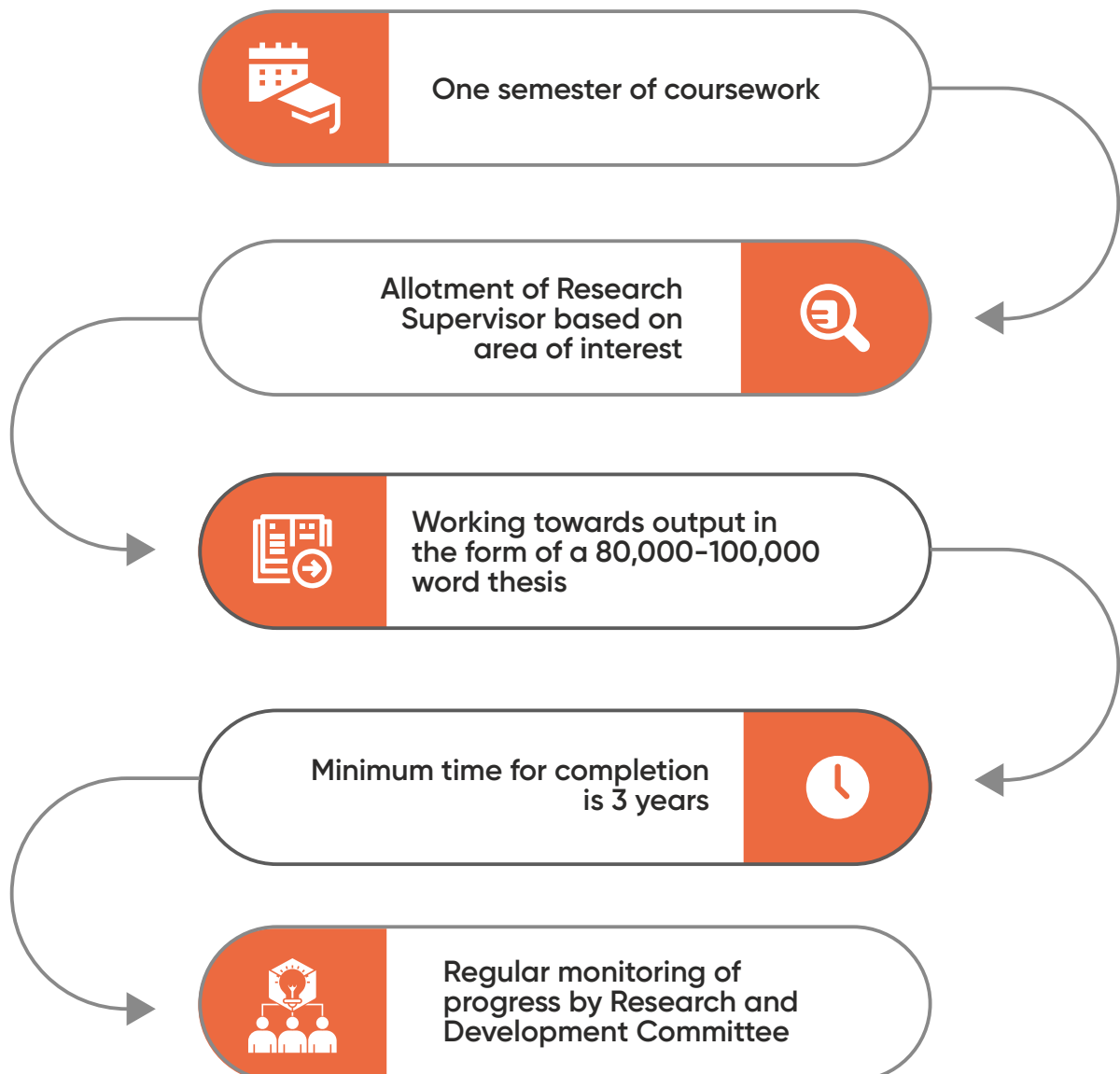
»» Benefits of completing a PhD Degree

Undertaking a doctoral research degree has many benefits :





How the GLSU SDRI PhD Programme Works





Programme Competencies



Awarded 120+
Ph.D. Degrees



Registered
350+ Scholars



100+ full-time faculty
supervisors



Rigorously structured
programme



Regular monitoring and
evaluation by experts



Intensive course work for
strong foundation in theory
and practice



Mentoring for writing and
data analysis

»» Achievements

ABDC List Publications



Dr. Avani Desai

Doing "reputation" in the Indian context: An employee perspective

International journal of Communication

Revealing the interplay between Big Five Personality traits, subjective financial literacy, Information search behavior and investment decision behavior

Finance India

Dr. Ankita Sharma

Identifying values behind the use of OTT platform: a means ends theory approach

Marketing Intelligence and Planning



Dr. Neeraj Pandey

Support for Increasing Low-Wage Workers' Compensation: The Role of Fixed-Growth Mindsets About Intelligence

Journal of Experimental Psychology: General



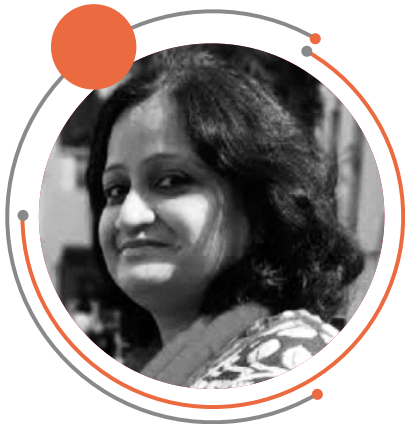
Dr. Pooja Sharma

The role of big data and predictive analytics in the employee retention: A resource-based view

International Journal of Manpower



» Awards



Dr. Suman Gupta – Best Paper Award

Hallmarking in Gold Jewellery: Study of perception amongst jewellers and consumers with special reference to Ahmedabad and Gandhinagar

International Conference on Lifestyle Products and Accessories

Prajakta Arote – Best Paper Award

Impact of Covid-19 on International Business: Evidences from Indian Economy

International e-conference on "Transitioning from Digital Inclusion to Digital Empowerment"



Dr. Bushra Kuresh – Best Paper Award

Fostering creativity in an online teaching environment during covid-19 in Ahmedabad city

International Colloquium by GLS University



Workshops



Empowering Authors: A Workshop on successful journal publication

Dr. Varsha Jain

22nd August 2023



Charting the future: Exploring emerging trends in marketing research

Dr. Vivek Ranga

30th September 2023



Data Analysis using Excel, EViews, SPSS and Amos

Dr. Gurmeet Singh Sikh | Dr. Hitesh Parmar

24,25 & 31st December 2023-24



Sampling Design

Dr. Abbasi Attarwala | Dr. Sameer Kulkarni

17th January 2024



Questionnaire Design & Advanced Data Analysis

Dr. Mamta Bhrambhatt | Dr. Murlidharan K

24th February 2024



Systematic Literature Review and Bibliometric analysis

Dr. Shalini Agrawal

17th March 2024

>> Distinguished Guests



Dr. Vivek Ranga

Director

ICFAI Business School,
Ahmedabad



Dr. Shashikala Gurpur

Jean Monnet Chair Professor

Director
Symbiosis Law School, Pune



Dr. Varsha Jain

Co-chairperson, Fellow Programme in Management, MICA

(Doctoral Level Program) Co-chairperson Research Professor,
Integrated Marketing Communication:
March 2018 – Present



Dr. Madhuri Parikh

Director and Dean (I/c.),

Institute of Law,
Nirma University



Dr. Shalini Agrawal

**Professor of Finance
Chandigarh University, Mohali**

Associate editor of the journal "Journal of Sustainable finance and investment" and "Asia pacific financial market"



Dr. Manoj Shah

Professor & Director, School of Commerce & Management

Dr. Babasaheb Ambedkar Open University

»» Specialized Research Cells

Interdisciplinary Research Cell

Explore endless possibilities at our Interdisciplinary Research Cell, one of the three dynamic research hubs at the School of Doctoral Research and Innovation. Break through disciplinary boundaries, collaborate across fields, and pioneer innovative solutions to complex challenges. Research conducted under this cell is eligible for grants and funding for presenting papers in international conferences, empowering researchers to make a global impact.

Sustainability Research Cell

Join the movement towards a sustainable future at our Sustainability Research Cell, one of the esteemed research cells housed within the School of Doctoral Research and Innovation. Dive into pressing environmental issues, develop renewable solutions, and contribute to building a world that thrives in harmony with nature. Researchers within this cell are eligible for grants and funding to present their work at international conferences, facilitating global collaboration and knowledge exchange.

Diversity, Equality, & Inclusion Research Cell

Celebrate diversity, champion equality, and foster inclusion in our Diversity, Equality, & Inclusion Research Cell, one of the vital research cells under the umbrella of the School of Doctoral Research and Innovation. Engage in research that promotes social justice, reduces inequalities, and strengthens inclusive communities. Research carried out in this cell is eligible for grants and support for presenting papers in international conferences, empowering researchers to drive meaningful change worldwide.



Coursework Highlights



Scientifically designed coursework to introduce participants to the entire research process



Customized coverage of research methodology for each discipline



Highly experienced faculty members from all over the country



Multi-modal assessment



Weekly open-house with Dean and faculty members



Training programs for various statistical tools and research databases



Library Resource Centre

70,000+

Print Books

50+

Newspapers and Periodicals

100+

Journals

10+

Online Research Databases

Anti - Plagiarism Software



Eligibility

Entry into the GLS University research programme is competitive and successful applicants usually exceed the minimum entry requirements. Applicants are assessed for their knowledge of their chosen discipline and their ability to complete a rigorous research project. The criteria for assessment of applications are:

- Academic achievements
- Domain knowledge in chosen discipline.
- Relevance of previous qualification to intended research
- Evidence of research ability



» Requirements For Application

Qualifying Programmes

A one year/two semester master's degree programme after a four year/eight semester bachelor's degree programme, with at least 55% marks in aggregate

Or

A Master's degree (bachelor's degree obtained in 10+2+3, followed by a master's degree) or a post-graduate diploma (two Years) in any discipline, with atleast 55%*

Or

A professional qualification such as CA, ICWA, CS with atleast 55%*

* A relaxation of five percent is given to candidates from SC/ST/OBC (non-creamy layer)/Differently-Abled, Economically Weaker Section (EWS)

Applications From Foreign Countries

An Equivalent qualification from a foreign educational institution accredited by an assessment and accreditation agency which is approved, recognized or authorized by an authority, established or incorporated under a law in its home country or any other statutory authority in that country to assess, accredit or assure quality and standards of the educational institution

Calculation of Eligibility

The percentage of marks obtained by the candidate is calculated based on the practice followed by the respective university/institution. In case of grades/CGPA, the conversion to percentage will have to be certified by the respective university/institution.

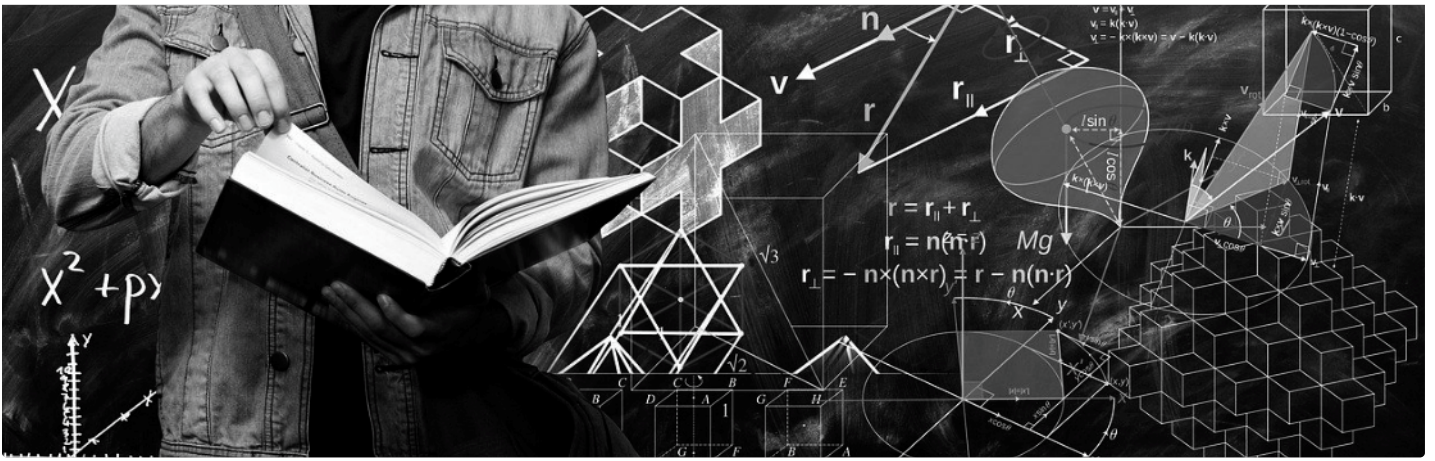
Applications in final year of qualifying programmes

- Candidates in final year of qualifying programs are eligible for application. If selected, such candidates will be offered provisional admission which will be confirmed after submission of mark-sheets and relevant documents providing evidence of having passed the master's degree/equivalent qualification as stated in the application.
- Candidates who apply based on their master's degree will have to submit final marksheet with above stated eligibility criteria.

Non-fulfilment of these conditions will automatically result in the cancellation of the provisional admission.

Applications with UGC-NET and Other Tests Cleared

Applicants who have qualified for fellowship/scholarship in UGC-NET/UGC- CSIR NET/GATE/CEED, will get an exemption from GLSU Research Aptitude Test (GReAT) examination



Admission Process

01

Complete Application form online at www.glsuniversity.ac.in

02

Upload required attachments and pay application fees of Rs. 300

03

Verify completed application form before submission

04

Receive Email Acknowledgement

05

Receive schedule for GLSU Research Aptitude Test (GReAT) and interaction with Research & Development Committee (RDC)

06

Appear for the online test (if applicable). Receive intimation of result within seven days.

07

Appear for interaction with RDC and discuss area of interest

08

If accepted into the programme, receive an offer of admission by e-mail.

09

Pay fees and complete formalities within the stipulated time

»» Our most recent graduates (2022-23)

Mehta Nikita Prajapti



Computer Application

Converting Handwritten
Medieval Devanagari
Manuscript Character into
Recent Devanagari Script
Character

Shah Manali Sanjeev



Commerce

A Comparative Study on
Financial Performance and
Growth of Selected Public
Sector and Private Sector
Banks in India

Abhishek Rajesh Kumar Agrawal



Management

Export Marketing
Strategies of Medical
Device Exporting Units in
India

Raval Brahma Ghosh



Management

Impact of Social Media
Marketing on Performance
of Films

Kasudiya Jenny Shrikant



Computer Application

Wireless Sensor Networks
Based Architecture for
Crowd Monitoring and
Alert Generation

Manpreet Arora



Interdisciplinary

Historical Background for
Implementation of GST in
India with Special Reference
to Managing its Dispute
Resolution Mechanism

Pandya Ushma Mukesh



Social Science

The Twenty-First Century
Women As Portrayed in the
Novels of Chetan Bhagat

Desai Ashit Vasantkumar



Management

Study on Effectiveness of
Extended Reality (XR) Tools
in Integrated Marketing
Communications: Special
Focus on Fashion Industry

Kirtika Chhetia



Management

Role of Social Media
Advertising as an enabler
for Women Entrepreneurs

»» Our most recent graduates (2022-23)

Gupta Rima Mukesh



Management

A Study on Understanding the Generational Diversity of Generation X and Generation Y with Special Reference to Employee Retention in Organizations

Jainik Nautam Vakil



Commerce

A Study on GST Adoption and Implementation: Perception of Chartered Accountants of Gujarat State

Ankita Sharma



Management

Why Do Millennial Consumers Use Mobile Wallets? An Investigation Into Consumers Usage Intention of Mobile Wallets

Baxi Minouti Kaivalya



Commerce

A Study on Banking Sector Frauds with Special Reference to Forensic Accounting

Deepa Khatwani



Management

A study to compare and analyze amongst various generation's foreign trip travel decisions



For further information, please contact:

School of Doctoral Research and Innovation

Gujarat Law Society Campus,
Opp. Law Garden, Ellis bridge,
Ahmedabad – 380009

P : +91 8320123770, 96876 61794

E : research@glsuniversity.ac.in

W : www.glsuniversity.ac.in